



Shaping practices
Influencing policies
Impacting lives

2023 Annual Report

IMPACT



TABLE OF CONTENTS

OUR AIM

IMPACT aims to shape practices and influence policies in humanitarian and development settings in order to positively impact the lives of people and their communities.

OUR PROGRAMMES



2-3
Table of Contents

4-5
Foreword



8-9
Humanitarian Planning & Prioritisation
Accountability & Inclusion

10-11
Public Health
Global Emergencies

12-13
Public Services, Markets & Infrastructures

14-15
Remote Sensing
PANDA
AGORA & Area-based Assessments

16-17
Climate, Disasters & Environment
Migrations & Displacement



18-19
Our Activities & Footprint

OUR OPERATIONS



22-23
Europe

24-25
West & Central Africa

26-27
East Africa

28-29
Middle East & North Africa

30-31
Central & South Asia

32-33
Latin America & the Caribbean



30-31
Our Partners

32-33
Our Staff & Finance

34-35
Code of Conduct & Governance

FOREWORD

In 2023 the tragic trend of multiplication and intensification of crises has continued, including escalating and new conflicts in Gaza and Sudan and natural disasters in Libya, Syria and Türkiye.

Increasing polarization in international relations and geopolitical competition have fueled violence and economic hardship, while concerted action to address climate change remains insufficient. Predictably, these challenges have disproportionately impacted the most vulnerable – those directly affected by crises and living in so-called ‘fragile’ contexts, as well as those living on the margins of societies, including slums and migrant communities.

Some crises have been in the international spotlight, while others have fallen off the radar or been ignored. Despite the efforts of many to raise the voices of the affected populations and to call for coordinated, ambitious and courageous action to support them, international solidarity has fallen short. On the contrary, we have seen a surge in nationalism, a refocusing on domestic issues and a loss of confidence in existing international mechanisms, including the collective safety net provided by the humanitarian architecture.

In 2023, for the first time, we saw a decrease in humanitarian funding. As a result, there is an expanding mismatch between increasing humanitarian needs and available resources to meet them, jeopardizing the ability of humanitarian and aid organizations to respond effectively to crises, and forcing some of them to exclude whole swathes of vulnerable communities from their programs.

It is at this critical juncture that the work of IMPACT becomes most urgent. Through our

growing ability to provide actionable evidence where it is most needed, including in hard-to-reach areas, we play an increasingly important role in supporting international solidarity mechanisms to prioritize the most vulnerable. As questions arise about the international solidarity system and its humanitarian architecture, we have a growing responsibility to contribute to the evidence base that underpins it.

In pursuit of these goals, together with our partners, we have achieved some important successes in 2023:

- We provided the baseline to inform the yearly humanitarian processes in 17 countries through our Multi-Sector Needs Assessments (MSNAs).
- We responded to 8 sudden onset emergencies, providing data and analysis to support rapid response.
- We worked together with communities in 11 countries to promote people-centred, locally appropriate and more sustainable aid action through 21 area-based assessments research projects.
- We continued expanding our research to support international action to mitigate and adapt to climate change.

Once again, I would like to take this opportunity to highlight, thank and congratulate all our colleagues and partners whose work provides light on the most vulnerable and forgotten. They are behind the achievements and learning presented in this report. We remain determined to keep moving forward and to meet the challenges of today and tomorrow.

Luca Pupulin

IMPACT Initiatives Chief Executive Officer





OUR PROGRAMMES



Photo | Data collection for the Burkina Faso 2024 Multi-sector needs assessment.

HUMANITARIAN PLANNING & PRIORITISATION

As the number of humanitarian crises outpace funding, it is more key important than ever to have the required evidence to promote needs-based and people-centred humanitarian action, ensuring the limited resources are utilised efficiently and effectively.

To this end, in 2023, IMPACT, through its REACH initiative, conducted Multi-Sector Needs Assessments (MSNAs) in [17 countries](#). MSNAs are annual, nationwide surveys that cover all crisis-affected geographic areas and population groups, designed, and implemented through a collaborative process that incorporates inputs from humanitarian agencies operating within the response. MSNAs help identify who is in need of what,

by producing statistically generalisable data about needs, vulnerabilities, and priorities of crisis-affected households. These findings then feed into annual response planning places and donor allocation processes. In many crises, MSNAs are providing the only comparable dataset on needs across sectors and geographic regions. This data regularly plays a critical role in estimating the number of people in need, thereby informing funding appeals and humanitarian strategy in-country.

Beyond individual country assessments, REACH supported the refinement of humanitarian needs measurement methodologies as part of the Joint Intersectoral Analytical Framework working group.

Comparing needs across crises to inform global decision-makers

Over the last few MSNAs cycles, our global team of data specialists have brought together individual country datasets to determine if and how this data could be used to compare needs across crises. In collaboration with global experts, REACH developed a robust analytical framework to better understand needs across sectors. Building on this framework, REACH is analysing data from almost all 2023 MSNAs to compare both the breadth and depth of needs in humanitarian crises across the

globe.

Looking ahead, REACH plans to continue building upon the analysis from 2023, with the aim of moving towards a stronger global comparative analysis system for humanitarian crises. In 2024, global research and development will pilot an integrated modular approach for MSNAs, that will feed directly into yearly analysis frameworks at the country-level, ensure a greater interoperability, and maximize usability of the data we collected.

ACCOUNTABILITY & INCLUSION

In 2023, IMPACT continued to support a more people-centred, accountable and inclusive humanitarian response. This effort focused on two overarching priorities: placing stronger emphasis on the priorities and preferences of affected populations in research, as well as supporting more inclusive participation of community members and local stakeholders throughout the research cycle.

Leveraging this people-centred approach with a focus on perception data, IMPACT produced several reports for humanitarian actors, including a [Global Key Findings](#) report that summarised key trends on affected people's perception of humanitarian assistance and their self-reported needs across MSNAs. Additionally, IMPACT conducted numerous field-level assessments focused on perception surveys, accountability, and inclusion. Examples include assessments on community perceptions and priority needs [from Sri Lanka](#), South Sudan's on community perceptions of humanitarian assistance, and community perspectives on displacement and durable solutions.

IMPACT also amplified its impact through targeted advocacy, publishing several advocacy papers including one on the [continued importance of reliable and independent data](#) in a more people-

centered humanitarian system.

IMPACT supports initiatives to enhance the inclusion and participation of affected communities in the research cycles through the development of guidance notes such as a Community Participation Toolkit and piloting various participatory approaches in countries like Sudan, [Haiti](#) and [Central African Republic](#). Additional support for inclusive research was provided through projects such as the Dual Voices project in Afghanistan, and gender and inclusion assessments in Ukraine and Ethiopia.

Finally, the Accountability & Inclusion team also focused on making this advocacy more 'visible' through participation in public-facing events such as the Humanitarian Networks and Partnerships Weeks [sessions on disability inclusion and digital inclusion](#), through engagement as part of the Inter Agency standing Committee Accountability to Affected Populations Taskforce, as well as through tailored briefings for key stakeholders, including donors.



Photo | Following the earthquakes in Türkiye and Syria, IMPACT supported UNDAC in launching the Multi-Sectoral Initial Rapid Assessment (MIRA).

EMERGENCY PRIORITISATION

To support aid actors responding to disasters and sudden-onset crises, IMPACT continued to work towards establishing global and country systems to prepare for, track, and respond to emergencies.

In 2023, IMPACT continued conducting [Humanitarian Situation Monitoring](#) in 13 countries, and working on establishing a more integrated system to link monitoring and response. By piloting the set-up of real-time monitoring systems, built around a common analytical framework, the goal is to identify hot-spot areas for a follow-up response and prioritisation efforts. To further support this workstream, IMPACT has partnered with the Tufts University and the Centre of Humanitarian change to pilot innovative ways to strengthen the linkages between evidence and decision making, in emergency contexts.

The Global Emergencies team also directly supported in both sudden-onset and forgotten crisis emergency responses, launching rapid need assessments, following the [Syria- Türkiye](#) and Afghanistan

earthquakes, [Storm Daniel in Libya](#), as well as in [Sudan](#), occupied Palestinian territories and Nagorno-Karabakh, among others. And strengthening our partnership with UNDAC in responding to sudden-onset emergencies over the past year.

Beyond direct response, IMPACT released four global alerts to global-decision makers, highlighting the risk of loss of life in countries like [Central African Republic](#), [Sudan](#), [South Sudan](#) and the occupied Palestinian territories. These targeted alerts were disseminated to relevant stakeholders, including the International Council of Voluntary Agencies- with whom IMPACT has been strengthening its relationship and the Emergency directors Group.

Finally, IMPACT has continued working on making its methodologies for data collection and analysis in emergencies more robust, including supporting country teams in embedding remote sensing techniques for monitoring purposes.

PUBLIC HEALTH

IMPACT's public health unit aims to improve the availability and utilisation of public health data in emergencies to inform actors in a timely manner to mitigate the worst excess morbidity, malnutrition, and mortality in humanitarian crises. With a focus on external global standards, precedents, and epidemiological principles at the forefront of field work, IMPACT continues to build internal capacity to equal global technical standards and promotes growth for IMPACT high quality public health assessments and analysis.

The public health portfolio has continued to grow with an increasing number of country teams conducting sectoral assessments in health, nutrition, water, sanitation, and hygiene, and food security, as well as supporting sectoral prioritisation processes such as the Integrated Phase Classification (IPC).

Formal Public Health Units operated in four countries: [Somalia](#), [South Sudan](#), [Yemen](#), and the [Democratic Republic of Congo](#). These units implemented crucial assessments and

analyses to guide ongoing aid responses.

IMPACT also conducted a significant number of sector specific public health assessments – [23 across 13 countries](#). These assessments directly informed prioritisation and response decisions by humanitarian actors. Their focus included measuring mortality baselines, nutrition surveys, and access to livelihoods.

To enable IMPACT to strengthen its technical capacity to implement more high-quality public health assessments, we invested in staff training:

Forty-two staff members were trained on IPC Acute Food Insecurity (IPC AFI) classification (35) and IPC Acute Malnutrition Classification (IPC AMN) (7) protocols. This expertise allowed two staff members to achieve Level 3 IPC facilitation status, and others to co-facilitate IPC analyses and support multiple analyses in different countries such as South Sudan (AMN) and the Democratic Republic of Congo (AFI).

Photo | In May 2023, REACH concluded the collection of SMART+ survey data in the Afder Pastoralist Livelihood (AFP) zone.





Photo | IMPACT participated in the 2023 global annual CCCM Cluster meeting.

PUBLIC SERVICES, MARKETS & INFRASTRUCTURES

In 2023, IMPACT brought together its Camp Coordination and Camp Management (CCCM), shelter & settlements, cash & markets, and education teams around a new workstream of public services and infrastructure. The new workstream aims to identify common approaches to understanding the physical, social, and economic dimensions of the delivery of essential services and access to shelter and housing in the contexts of crises.

Cash & Markets

Our goal is to support humanitarian and development actors in delivering responses that strengthen rather than undermine existing market systems, using modalities that reflect the preferences of people affected by crises.

In 2023, IMPACT conducted cash and markets research through 162,615 surveys across 7,569 markets globally, leading [Joint Market Monitoring Initiatives in 16 countries](#). We also continued to support key global partners by serving on advisory committees

for the CALP Network, the Markets in Crises (MiC) Community of Practice, and the Minimum Economic Recovery Standards, as well as contributing market expertise to global guidance published by MiC, the Global Shelter Cluster, and the Global Food Security Cluster.

CCCM

IMPACT works hand in hand with CCCM practitioners to ensure information on internal displaced persons (IDPs) living in camps and camps like setting is available to inform needs based and people centred CCCM responses. In 2023, IMPACT has increased its support to the CCCM Cluster and sector related working groups conducting [camp and site monitoring, profiling, and area-based assessments in 10 countries](#), including the newly activated working group in occupied Palestinian territories and the cluster in [Sudan](#). We continued to focus on climate change driven impact on displaced communities and scaled-up our efforts to inform durable solutions for displaced persons living in camp and camp-like settlements, particularly in [Somalia](#) and [Ukraine](#).

Shelter & Settlements

With this workstream, IMPACT aims to inform the delivery of shelter & settlements responses that enable people living in crises to fulfil their right to adequate housing. IMPACT is the Global Shelter Cluster (GSC) assessment focal point within the Global Support Team of the cluster and is a member of the GSC Strategic Advisory Group. During 2023, we continued our partnership with the GSC, focusing on the revision of the [Information Management and Assessments \(IMAS\) toolkit](#) that is a library of relevant resources to information management officers in national clusters. In 2023, the [Shelter Severity Classification](#) was rolled out for the first time. IMPACT

supported the development of this framework to assess the severity of shelter needs in the previous years.

Education

IMPACT aims to provide up-to-date data and analysis to guide the action of education partners who work to improve inclusive and quality education in emergencies contexts. In 2023, IMPACT continued its partnership with the Global Education Cluster (GEC). Within this framework, IMPACT trained five Education and Child Protection Coordination Teams and relevant partners on the joint education in emergencies – child protection analytical framework and facilitated sessions on Needs Assessments and People in Need (PiN) calculation during the Core Coordination training and GEC annual meeting. IMPACT also supported 15 country clusters in PiN calculation and provided technical support to the Joint Education Needs Assessment in Democratic Republic of the Congo, Nigeria, Central African Republic, and Pakistan.

REMOTE SENSING

Earth observation tools and techniques are indispensable for monitoring the earth's changing climate. With climate change increasingly impacting already vulnerable communities in crises, we are mirroring the organization's commitment to mainstream climate, by looking to mainstream remote sensing across IMPACT programs. Ultimately, we would like to see remote sensing be considered an essential part of the evidence base required to inform humanitarian action.

To achieve this aim, we have been working to integrate remote sensing into our core research workstreams:

- To inform needs-based assistance REACH has been working to integrate remote sensing in intersectoral analysis. A good example of this work is in the Horn of Africa, where a [regional analysis](#) of the impacts of drought was conducted.

- To inform people-centered assistance, REACH has prioritized understanding people's physical and social spaces, through area-based analysis. A good example of this work is in [Armenia](#), where an area-based risk assessment was conducted.
- To inform emergency response, REACH has worked with UNOSAT to deliver near real-time analysis of the impacts of disasters, e.g. [Libya](#), and conflict, namely in [Gaza](#).
- To mainstream these approaches more consistently, REACH has worked to upscale our technical capacity, adding dedicated GIS and remote sensing staff to support key workstreams in Humanitarian Planning and Prioritisation, Global Emergency and Area-Based Assessment and Disaster Risk Reduction teams.

PANDA

IMPACT's PANDA initiative aims to improve the effectiveness, efficiency and efficacy of humanitarian and development programmes by working with a range of stakeholders on independent third-party monitoring, impact evaluations, sector-response monitoring, and evaluation along with building the capacity of local and international actors to gain a better understanding of crisis dynamics and ultimately better respond to crises and shocks.

In 2023, IMPACT implemented 2 global PANDA projects on disaster displacement and enhancing the capacity and quality of the humanitarian shelter and settlement response. In parallel, IMPACT conducted thematic assessments and evaluations,

provided third-party monitoring services, and supported the harmonisation of Monitoring Evaluation Assessment & Learning frameworks via 19 PANDA projects across 11 country missions. Findings from these projects have been used in countries such as Somalia and Democratic Republic Congo as the basis for facilitating key lessons learned workshops between donors and implementing partners, with the objective of supporting more quality, effective, and accountable humanitarian, and development response. Selected results from PANDA projects have also been used by decision-makers to inform their 2024 programmatic strategy and steer their activities based on people-centred evidence.

AGORA & AREA-BASED ASSESSMENTS

Area- and settlement-based assessments support humanitarian planning and response actors intervening specific areas and settlements affected by humanitarian crises to co-design holistic aid strategies and programs with local communities, affected populations and stakeholders in charge of essential service delivery. Building on mixed methods research and community engagement, they provide a nuanced understanding of multi-sector response priorities along with most appropriate response modalities in a priority area of intervention, reflecting affected people's perceptions and local stakeholder's capacities.

IMPACT conducts such assessments under the REACH initiative to support humanitarian coordination and implementing partners in a variety of crisis settings, including responses to disaster risks (e.g. Moldova), post-conflict recovery (e.g. Libya, Syria), and settlements hosting forcibly displaced populations (e.g.

Burkina Faso, Afghanistan, Colombia, Mali, Niger, Ukraine, Iraq) in both rural and urban settings. In 2023, we completed 21 area-based assessments research projects across 11 countries, profiling the needs across 119 areas.

Under the AGORA initiative, IMPACT conducts area-based assessments in close collaboration with ACTED to support community-driven programs in protracted crisis, using territories that make sense to communities to plan, deliver and coordinate assistance based on quality and participatory data. In 2023, we developed a new methodological toolbox and training module, and trained 7 country teams. In 2023, 7 AGORA projects were implemented actors in Burkina Faso, Syria, Sri Lanka and Afghanistan and Central African Republic to support community-led local recovery response in localities that had experiencing severe conflict, disaster risk or internal displacement issues.

Photo | In 2023 the AGORA initiative implemented 7 projects.





Photo | In 2023 IMPACT was present at COP28, and spoke at the panel “Action and Support to Avert, Minimize, and Address Displacement Related to the Adverse Effects of Climate Change”, organized by the Platform on Disaster Displacement (PDD) and UNOPS.



MIGRATIONS & DISPLACEMENT

In 2023, IMPACT’s work on displacement developed on two key fronts. First, we focused on deepening our understanding of the specific challenges faced by displaced populations. IMPACT continued the implementation of a [large-scale longitudinal survey focused on Ukrainian refugees and returnees](#). This extensive survey, with over 5,500 monthly interviews across more than 20 rounds of data collection, provided critical insights into their displacement experiences and pathways to solutions. These included several modules and [child consultations](#) tailored to address [Save the Children](#), the Ukrainian Red Cross and IFRC’s data needs on child protection, humanitarian needs, and conditions of return. IMPACT presented the Ukraine Longitudinal Survey at the International Forum on Migration Statistics, as an innovative approach to study migration and fill data gaps.

Secondly, we began the process of revamping our workstream on displacement

and durable solutions, promoting a more coherent and standardized approach across countries and methodologies. Leveraging and improving IMPACT’s existing tools and data with regards to characterising displacement, our goal is to respond to displacement and solutions information needs more effectively. In this process, IMPACT is also working to ensure that our data and methodologies address data gaps and align with global standards. This commitment led us to match [three multistakeholder pledges](#) at the Global Refugee Forum, towards advancing socioeconomic integration and self-reliance, localization, and climate action. Additionally, we joined the Expert Group on Refugee, IDP and Statelessness Statistics, reinforcing our alignment with existing global standards on refugee and IDP data. Last, IMPACT repurposed Multi-Sector Needs Assessments data in order to inform the [COP28’s](#) debate on climate mobility, loss, and damage.

CLIMATE, DISASTERS & ENVIRONMENT

More frequent and intense disasters, changing climate patterns and environmental degradation are increasingly driving and aggravating humanitarian needs in fragile and crisis affected contexts. As the humanitarian community is taking steps to better address the current and future impacts of climate change on populations already impacted by crises, IMPACT is committed to contributing evidence to demonstrate the impact of climate change on increasing humanitarian needs and to enable communities whose lives and well-being are or risk being disrupted by the impacts of climate change to access the support they require to adapt.

IMPACT is working towards mainstreaming an understanding of climate into its research programs. In 2023, we launched the development of a global toolbox on risk information, set up a taskforce on this topic, and consulted with subject-matter experts

and humanitarian agencies, to enhance our ability to produce reliable and actionable evidence. In the field, IMPACT’s assessments are informing humanitarian actors on the interplay between climate change impacts and humanitarian needs in displacement, conflict, and recovery settings. This includes research that mapped hazard exposure on a large scale in the Central African Republic, South Sudan, Yemen, Moldova and in the Horn of Africa; as well as 35 assessments shedding light on the humanitarian impact of disasters at the local level in Ukraine, the Democratic Republic of Congo, Sri Lanka, Kenya, and Somalia. At the global level, IMPACT collaborated with the Platform on Disaster Displacement to present a policy Brief at the COP28, discussing the potential for Multi-Sectoral Needs Assessments for informing policy discussions on Loss and Damage in Fragile and Crisis Affected contexts.

Photo | In 2023 the migration and displacement unit participated in the International Forum on Migration Statistics.



OUR ACTIVITIES & FOOTPRINT

397

Research cycles

244,531

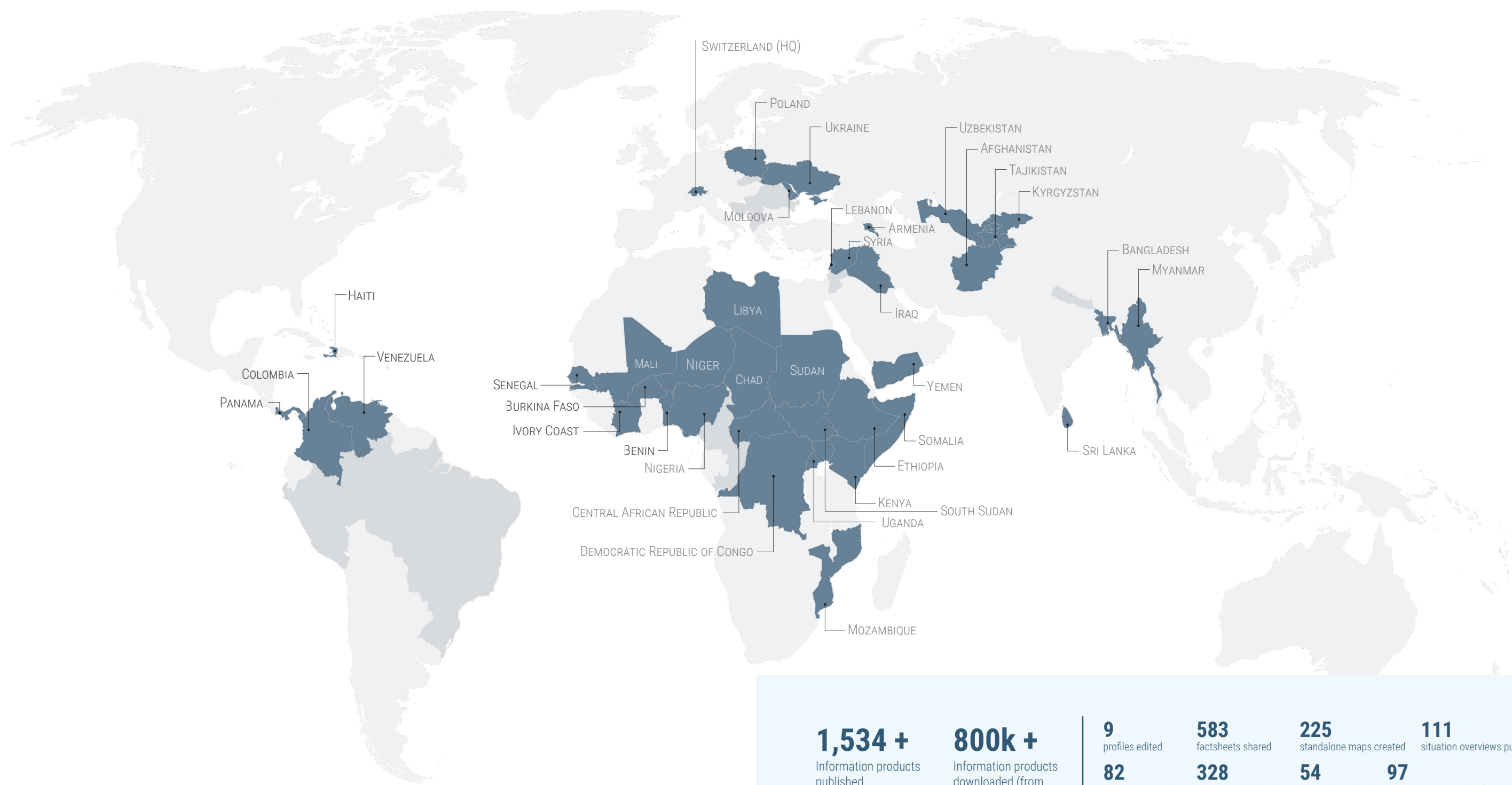
Households interviews

897

Focus group discussions

325,537

Key informant interviews





REGIONAL HIGHLIGHTS

REGIONAL HIGHLIGHT

EUROPE

UKRAINE

In the third year of full-scale conflict in Ukraine, IMPACT remains committed to providing critical information to support humanitarian, early recovery and reconstruction action across the country.

In 2023, IMPACT's multi-sector needs assessments (MSNA) provided an essential evidence base for the Humanitarian Needs and Response Plan, which showed that there were 14.6 million people in need with an associated financial requirement of US \$3.11 billion. IMPACT continued to survey people in and leaving from Ukraine to understand the mobility patterns of Ukrainian refugees, returnees from abroad, and the underlying push and pull factors.

Over the past year IMPACT's Humanitarian Situation Monitoring Team developed and implemented a Settlement Vulnerability Index to track changes over time in communities across conflict affected areas, providing regular updates and allowing for the isolation of trends of improvement and deterioration. The Emergency Team integrated Accountability to the Affected Populations into front line assessments and began working with local NGOs from target communities to strengthen relationships and build capacity.

Conflict-related events affecting industrial objects are tracked through the Hazardous Events Monitoring Initiative to support humanitarian actors, local authorities, emergency responders, and environmental organisations to understand and address the resulting environmental and public health implications. In 2023, we strengthened the operational applicability of this initiative, collaborating with the WASH Cluster and Ukraine's Ministry of Economy to consolidate

data on war-induced contamination to support localised decontamination action.

In 2023, IMPACT also established a Localisation Team, to provide data to support a locally led and non-duplicative humanitarian response. To meet this objective, the Localisation Team developed and produced Local Responder Area Profiles

"The data on hazardous industrial events provided by REACH is a goldmine to understand public health impacts from the war."

- WHO representative in Ukraine

to collect actionable, area-based information on local non-governmental actors' needs, capacities, ways of working, and preferences for international support to inform better international integration with local systems on local terms.

“

We understand that we can rely on IMPACT data. This study (MSNA) allows us to explore the question of how to proceed, which strategies of development, integration and reintegration to develop further.

Director-General of the Ukrainian Red Cross.

Photo | Data collection for the 2023 Multi-sector Needs Assessment in Ukraine



REGIONAL HIGHLIGHT

WEST & CENTRAL AFRICA

DEMOCRATIC REPUBLIC OF CONGO

The Democratic Republic of Congo, who has for over 30 years faced a protracted crisis, especially in its eastern regions, is today facing mounting challenges in its aid system. Including evidence-based prioritisation - to reach the most vulnerable- quality and accountability of the response, and anticipation of cyclical shocks such as floods due to climate change.

IMPACT, through REACH initiative, contributed to addressing these challenges by: strengthening humanitarian coordination through Humanitarian Situation Monitoring, MSNAs, and by supporting the Crisis Analysis and Response Quality Working Group; improving response quality through its work on Accountability to Affected Populations and Third-Party Monitoring; as well as launching innovative projects on public health and on environmental risk analysis which combined local knowledge with geospatial analysis and remote sensing.

In 2023, a system-wide scale-up was declared in the DRC due an escalation of the crisis and the urgency to secure more resources for the response. Recognizing significant information and decision-making gaps among partners, IMPACT advocated for a structured approach to address these issues. These efforts culminated in the creation of the Crisis Analysis and Response Quality Working Group, led by OCHA at the national level. This group aims to provide a comprehensive understanding

of the context, pre-existing vulnerabilities, humanitarian needs, access constraints, and response gaps, to inform both local operational strategies and high-level strategic decisions. While still in its early stages, the working group has already garnered praise from local and national platforms for its commitment to filling critical gaps in a response that has often lacked innovation.

IMPACT continues to strive for a more effective and accountable humanitarian effort in the DRC, ensuring that the most vulnerable populations receive the support they need.

Photo |
Outreach
campaign in
CAR



CENTRAL AFRICAN REPUBLIC

In 2023, REACH prioritized understanding the needs of communities in the Central African Republic. Over 12,000 households across 72 districts participated in a Multi Sector Needs Assessment (MSNA). Building on this data, IMPACT partnered with OCHA for a third year to launch a multi-pronged outreach campaign. This campaign used

posters, radio broadcasts, and public events to disseminate with assessed communities findings of the MSNA, but also of the Humanitarian Needs Overview as well as the content Humanitarian Response Plan.

REGIONAL HIGHLIGHT

EAST AFRICA

SUDAN

Since the onset of the current crisis in Sudan on April 15th 2023, the impact on humanitarian needs has been immense. With more than 300,000 people displaced within the first two weeks of the crisis, IMPACT began to disseminate regular information on displacement dynamics through its crisis thread. In the days and weeks that followed IMPACT launched a number of cross-border assessments to provide humanitarian response partners with timely analysis of the rapidly evolving needs of refugees and of the population remaining in Sudan. Examples of the cross-border assessments included reports on the situation in settlements in [Khartoum](#) and [Darfur](#).

While access constraints continued to impact the operational presence of INGOs in Sudan, IMPACT in collaboration with data collection partners in Sudan launched its first assessments in Sudan in September 2023, focusing on the needs in hard-to-reach areas of [West Darfur](#), [South Darfur](#),

[Central Darfur](#), and [East Darfur](#). In addition to providing response partners with critical evidence of humanitarian needs in the Darfur region, these assessments contributed to the Humanitarian Needs Overview, the annual strategy of donors, and were used as part of the evidence-base for the [Integrated Food Security Phase Classification \(IPC\) in November 2023](#).

With widespread information gaps, IMPACT in collaboration with OCHA and IOM initiated the Assessment and Analysis Working Group (AAWG) in Sudan. By co-chairing the AAWG, IMPACT contributed to developing standardized assessment methodology guide and toolset for needs analysis and emergency Prioritisation in the Sudan response.

To inform effective and evidence-based cash responses in Sudan, IMPACT in close collaboration with the Cash Working Group (CWG) launched the [Joint Market Monitoring Initiative \(JMMI\) in Sudan](#). With a need to scale up multi-purpose cash assistance as part of Sudan's famine prevention plan, timely information on price development and market dynamics has proven to be critical.

“The cross-border needs assessments conducted by IMPACT Initiatives in June and July played a key role in filling data gaps during the early stages of the conflict and raising awareness of the urgency of food security needs. At this point in the conflict, information on displacement patterns and priority needs both within and outside of Sudan were very limited.”

- INGO staff member involved in the early stages of the Sudan crisis response.



Photo | MSNA enumerator training in Lodwar (Turkana County, Kenya)

KENYA

Five consecutive failed rainy seasons have severely impacted Kenya's arid and semi-arid lands (ASALs). Building on [our 2022 work](#) documenting the worsening conditions in this region, IMPACT conducted the 2023 MSNA. The first in Kenya outside of the established camp locations aimed to gather crucial data to inform the Long Rains Assessment (IPC). While some early rains fell before data collection, the findings revealed a critical situation – the populations faced

significant unmet needs in [water, sanitation, and hygiene \(WASH\)](#), as well as [livelihoods](#).

These findings played a vital role when presented during the July 2023 IPC analysis. Partner organizations, particularly the National Drought Management Authority and the Kenya Humanitarian Partners Team, highlighted the data's robustness and its impact on their decision-making.

MIDDLE EAST & NORTH AFRICA

In February 2023, Northwest Syria was hit by a series of devastating earthquakes which claimed over 4,500 lives and struck a region already contending with the long-term effects of years of conflict, economic instability, and insufficient access to food, water and healthcare. In the first days and weeks after the earthquakes, especially while aid deliveries were delayed, IMPACT's data collection and analysis proved critical.

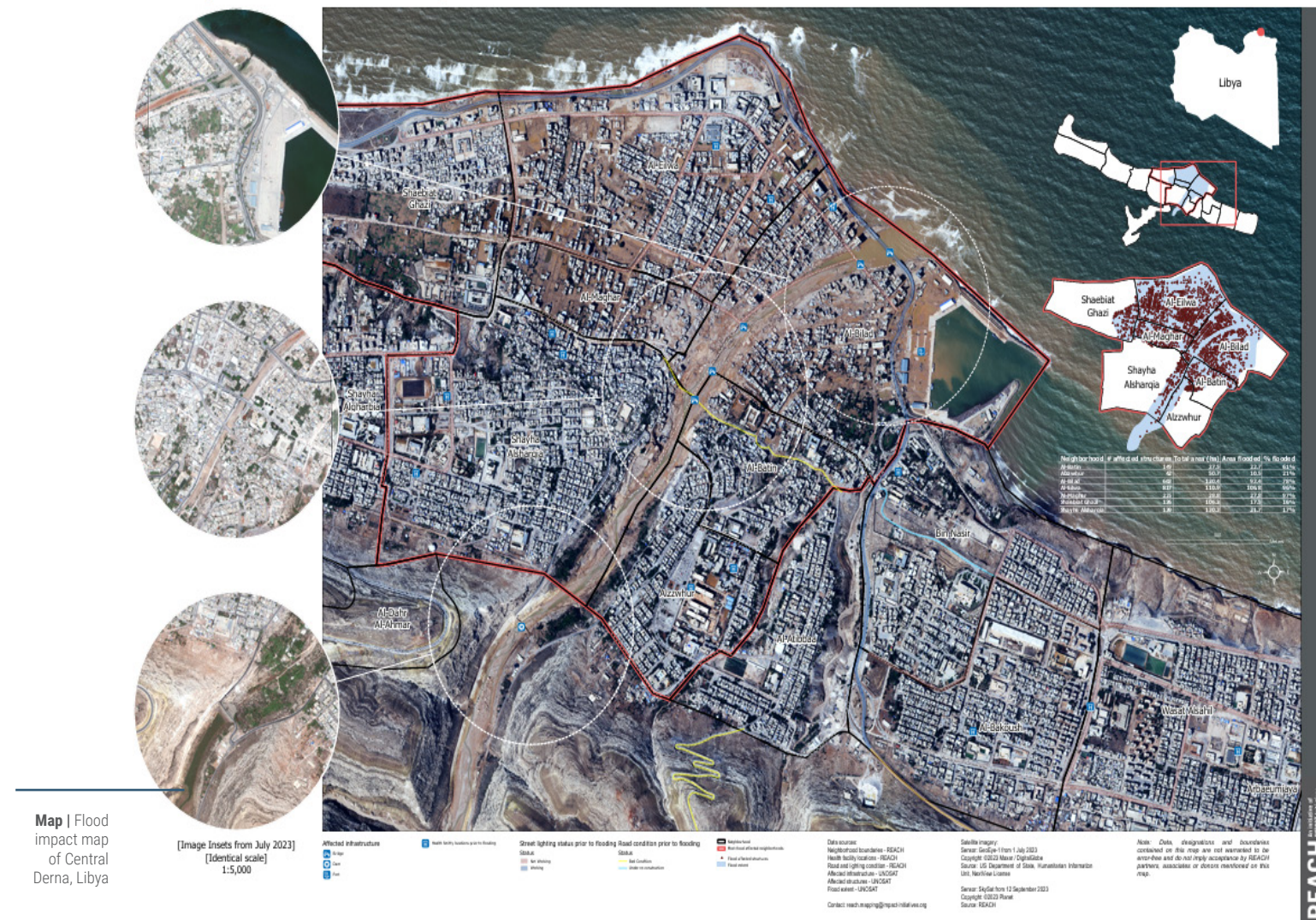
According to the final mission report of the Inter-Agency Standing Committee's Operational Peer Review, IMPACT's findings contributed to ensuring a broad common understanding of the situation as the basis for a joint response, while also informing the Flash Appeal for funding launched in the aftermath of the earthquake. More than a year on, IMPACT continues to monitor the long-running impacts of the earthquake, particularly in the context of decreasing humanitarian programming and funding.

For thirteen years, the region has been facing a worsening crisis on multiple levels. The income erosion and affordability crisis resulting from high inflation, currency devaluation and poor economic performance resulted in increased levels of hardship among populations already affected by war, displacement and destruction. Combined with the effects of a lack of access to quality basic services, deteriorating key civilian infrastructure and heightened conflict-related protection risks, the economic crisis has severely undermined people's capacity to cope. The extensively documented drought and water crisis, as well as public health shocks, notably the cholera outbreak, also impacted the resilience of populations, increasing their dependency on humanitarian interventions.

A group of men are actively demolishing a building. They are using tools like hammers and pry bars to break apart the structure. The ground is covered in rubble and debris. In the background, a damaged car is visible, and the overall scene suggests a conflict zone or a site of destruction.

Photo | Aftermath of the earthquake that struck Northwest Syria

For Humanitarian Purposes Only
Production date : 13 September 2023



On September 10, 2023, storm Daniel hit the northeastern Libya, with floods causing largescale destruction particularly in the city of Derna, after two dams broke upstream. IMPACT responded through a phased strategy adapted to the humanitarian community needs in information and evidence to target their interventions.

INGO expertise. This was followed by in-depth sectoral assessments in education, WASH, and cash markets. And to support early recovery efforts, IMPACT informed actors through a comprehensive Area Based assessment of Derna city, as well as an Environmental Risks assessment of the Northeastern areas. This swift and comprehensive response, funded by BHA, Swiss Development Cooperation, and the H2H network, garnered positive feedback, particularly for its timeliness.

REGIONAL HIGHLIGHT

CENTRAL AND SOUTH ASIA

AFGHANISTAN

Afghanistan's recurrent trend of natural disasters demands timely and comprehensive information to guide immediate emergency response as well as medium-term recovery efforts. Consequently, the REACH Afghanistan mission in 2023 led and supported ad-hoc emergency assessments to establish a shared evidence base for all response actors by identifying and addressing information gaps through sectoral or multi-sectoral assessments.

As part of this effort, in 2023, the Afghanistan team developed the Multisectoral Rapid Assessment Tool, which has been utilised by OCHA multiple times in times of crisis.

Between 7-15 October 2023, western Afghanistan experienced three earthquakes with a magnitude of more than 6.0 along with numerous aftershocks, impacting five districts of Herat province and with more than 1,300 lives lost.

In response to this earthquake, the REACH Afghanistan team focused on assessing highly damaged districts to understand the scope and severity of conditions through a joint multisectoral rapid needs assessment (9-10 October), three ad-hoc rounds (on 10 October, 25 October, and 14 December 2023) of Joint Market Monitoring Initiative (JMMI), and a joint Households Building Damage Assessment.

As part of the efforts, and to ensure an effective response, REACH co-led, the Households Building Damage Assessment jointly with UNDP from October 2023 to February 2024. This assessment aimed to assess the damage caused to households' residential buildings, public infrastructures (including mosques, marketplaces, education and health facilities), and the livelihoods needs and conditions of households affected by the earthquake, which helped in informing the modalities and targeting of reconstruction planning and informed shorter-term emergency and basic needs response.

Map | Joint Market Monitoring Assessment following the 2023 earthquakes in Herat province.

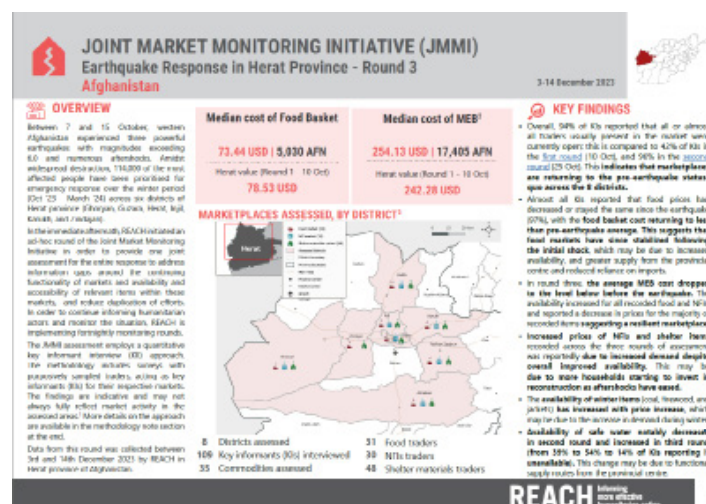


Photo | Participatory assessment in Sri Lanka.

SRI LANKA

In 2022, Sri Lanka experienced its worst economic crisis since independence, leaving 5.7 million people in urgent need of humanitarian aid. The crisis included severe food insecurity, threatened livelihoods, medical shortages, rising protection concerns, and increased climate vulnerability. In response, IMPACT, through REACH, established a presence in Sri Lanka in 2023 to support crisis response and prioritize aid with a focus on Accountability to Affected People. Additionally, IMPACT, through

AGORA, has provided evidence-based data and analysis to help humanitarian and development partners, along with affected communities, better predict, prepare for, and respond to risks. This work includes the Area-Based Risk Assessment (ABRA) and Livelihoods Resilience Assessment, which analyse hazard exposure and community vulnerability. ABRA produced hazard and multi-hazard maps to help stakeholders identify high-risk areas and plan resilience-building activities.



REGIONAL HIGHLIGHT

LATIN AMERICA & THE CARIBBEAN

COLOMBIA

In 2023, Colombia continued to grapple with overlapping persistent humanitarian challenges – particularly in areas where State presence is more limited - arising from the expanding geographical impact of internal armed conflict, its intensification in some areas, and ongoing disasters. In addition, Colombia hosts some 2.9 million Venezuelan migrants and refugees who still require particular attention, especially regarding socio-economic integration. Increasing numbers of migrants and people in need of international protection (mixed movements) also transit through Colombia and the region overall, facing significant protection risks.

In 2023, IMPACT, through its initiative REACH, launched the EVIDEM consortium in partnership with IMMAP, 3IS and ACAPS. The consortium sought to overcome the dispersion of assessment and information management efforts and to inform [OCHA's Flagship Initiative](#), with a strong focus on informing localised responses and contributing to put community priorities, capacities, risks, and resilience at the centre of humanitarian programming.

With this goal, REACH conducted area-based assessments to inform prevention and early response in flood prone areas such as Ciénaga, in the department of Magdalena; and to [evaluate community perceptions of humanitarian response in La Guajira](#), a department with a long-standing humanitarian presence.

At the programmatic level, REACH contributed to strengthen the cash response in Colombia through its Joint market monitoring initiative, an evaluation of livelihood programming for migrants and refugees, and cash feasibility assessments to promote the use of cash in rapid responses to internal conflict.

Lastly, at the regional level, the Colombia mission contributed to develop partners' capacities to collect, analyse and utilise data to better respond to the [needs of people on the move](#) across Chile-Peru, Brazil-Venezuela and Colombia-Panama.



Photo | Rural data collection in Colombia.

HAITI

In 2023, IMPACT Initiatives undertook crucial projects in Haiti, bolstering humanitarian efforts and grasping community needs on a national scale. A central endeavour was the Multisectoral Needs Assessment (MSNA), encompassing vital sectors such as health, protection, education, water, hygiene and sanitation, shelter and non-food items, food security and livelihood, accountability to affected populations through extensive data collection across all 10 Haitian departments.

Collaborating with Concern, Groupe JEVIDEV, GVC WEWORLD, ORRAH, AVSI, ACTED and CRS, the MSNA offered a comprehensive perspective on humanitarian needs, steering the 2024 Humanitarian Programming Cycle. Notably, the Metropolitan Zone of Port-au-Prince received focused attention, with a dedicated MSNA targeting populations in low-income areas. An in-depth case study in Carrefour-Feuille shed light on challenges within a fragile security context, providing valuable insights into local community needs and priorities for a more tailored humanitarian response despite security constraints.

The Humanitarian Situation Monitoring complemented the MSNA, enhancing understanding of needs in hard-to-reach areas within the Artibonite department and facilitating improved humanitarian responses where information access is limited due to access challenges.

In collaboration with the General Directorate

of Civil Protection, IOM, and OCHA, IMPACT contributed to developing and implementing information management systems for disaster preparedness. This initiative lays the groundwork for a robust disaster response information management system that can be utilised over the long term. In this regard, IMPACT participated in the collaborative development of damage assessment and needs analysis tools. Additionally, IMPACT produced a series of risk maps for each of Haiti's 10 departments, considering natural hazards, population vulnerabilities, and exposures to these risks in their creation.

By revitalising the Joint Market Monitoring Initiatives Haiti, IMPACT Initiatives facilitated humanitarian access to information on prices and availability of essential household goods for vulnerable households. This enabled better-informed humanitarian responses, particularly in the form of Cash Transfer Programming.

Photo | Data collection of the 2023 Multi-sector needs assessment in the department of Sud-Est.



PARTNERSHIP FRAMEWORK

IMPACT promotes a collaborative approach and supports established inter-agency coordination mechanisms at global and country levels. In 2023, IMPACT continued to strengthen its role in the global humanitarian system, notably through its participation in several bodies of the Inter-Agency Standing Committee as well as through its active engagement in global clusters.



PARTNERSHIP FRAMEWORK OUR SISTER ORGANIZATION

ACTED is IMPACT's sister organisation. ACTED hosts and facilitates IMPACT's field operations in many countries, and co-implements the AGORA initiative.



PARTNERSHIP FRAMEWORK MEMBER OF JOINT INITIATIVES

The United Nations Institute for Training and Research (UNITAR)'s Operational Satellite Applications Programme (UNOSAT) provides REACH with remote sensing expertise and technical support.

DONOR AGENCIES



GLOBAL CLUSTERS



UN AGENCIES

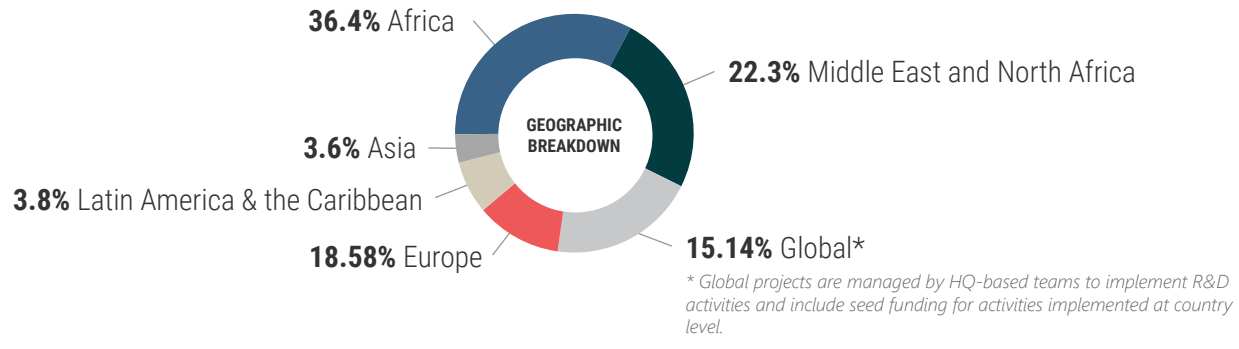
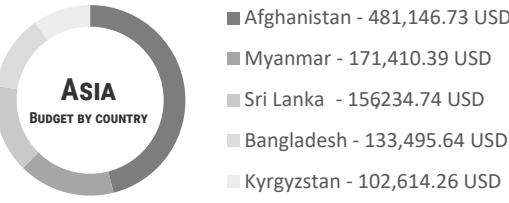
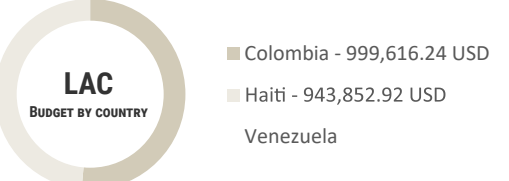
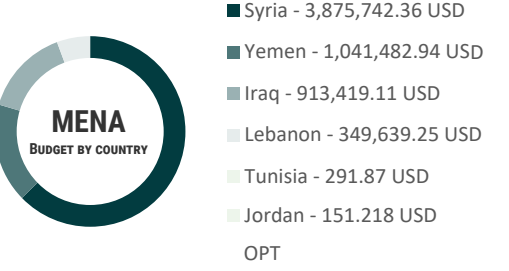
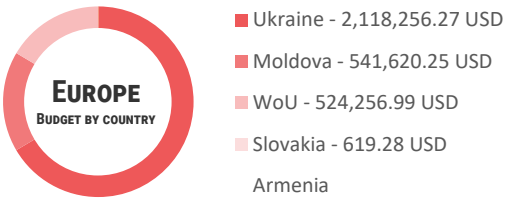
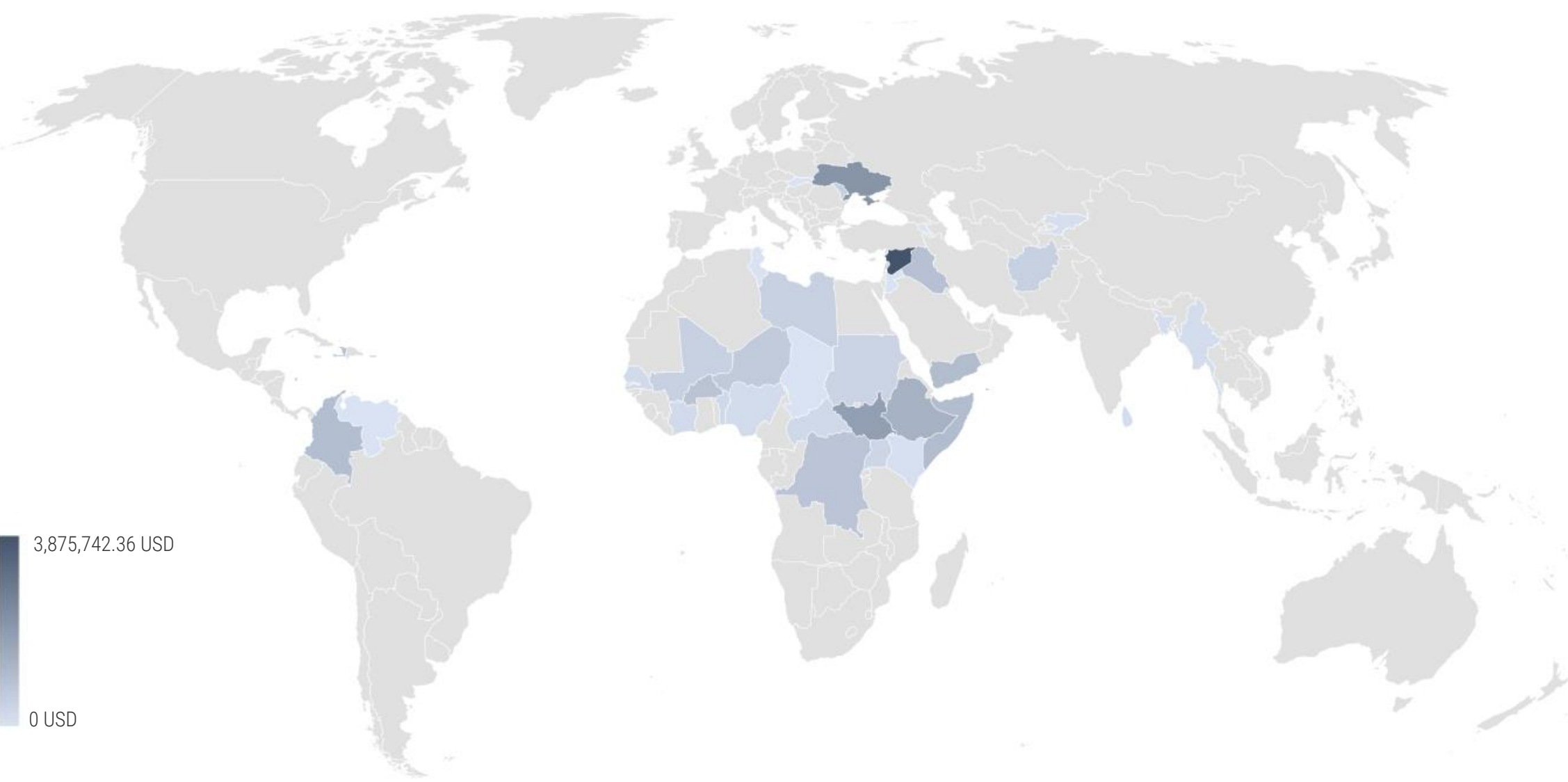


OTHER PARTNERS

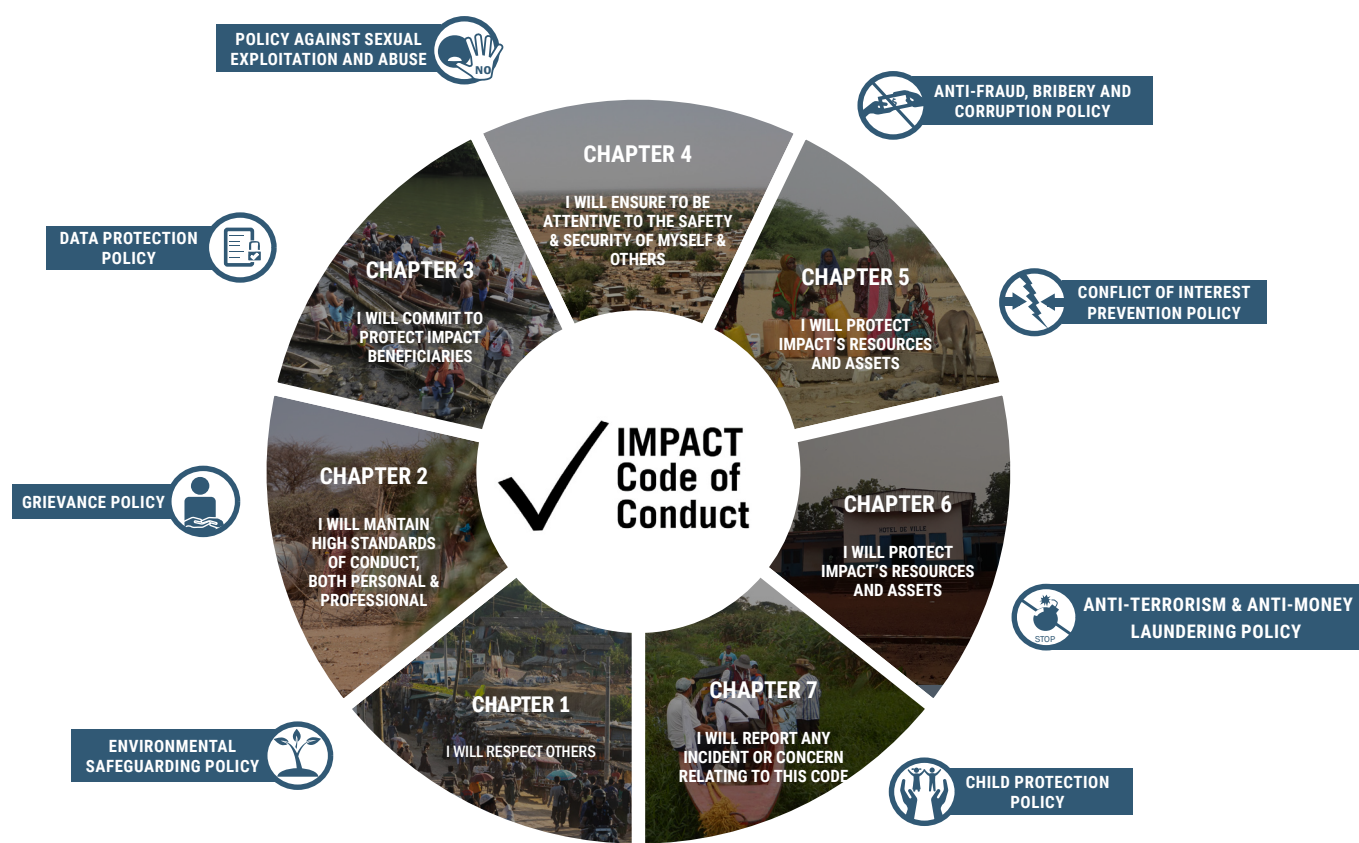


FINANCE

In 2023, IMPACT operating revenue amounted to **27,158,290.54 CHF**, with **43 donors** and **183 projects** implemented in 2023.



CODE OF CONDUCT



ANTI-FRAUD, BRIBERY AND CORRUPTION POLICY
IMPACT has a no tolerance approach towards corruption and is committed to respecting the highest standards in terms of efficiency, responsibility and transparency in its activities.

CONFLICT OF INTEREST PREVENTION POLICY
To ensure the most efficient, responsible and transparent delivery of aid, IMPACT, its staff and partners commit to preventing their private interests conflicting with their duties.

ANTI-TERRORISM AND ANTI-MONEY LAUNDERING POLICY
IMPACT is committed to never knowingly support, tolerate or encourage terrorism, the activities of those who embrace terrorism and anti-money laundering activities.

CHILD PROTECTION POLICY
IMPACT commits to safeguarding children from harm within internal procedure, throughout all activities and particularly in the implementation of child protection mainstreaming within research.

POLICY AGAINST SEXUAL EXPLOITATION AND ABUSE
IMPACT adopts a zero tolerance approach towards sexual exploitation and abuse, and is thus committed to their prevention both within the organisation and within the framework of its programmes and beneficiary populations.

GRIEVANCE POLICY
IMPACT's Grievance Policy provides a framework for professional grievances raised by staff through internal dedicated channels of reporting, and a proper response mechanism and follow-up.

DATA PROTECTION POLICY
IMPACT's Data Protection Policy controls how personal information can be used and shared, as well as ensure the protection and confidentiality of personal and sensitive data.

ENVIRONMENTAL SAFEGUARDING POLICY
IMPACT is committed to the promotion of a 3Zero world: zero exclusion, zero carbon, zero poverty. In line with this, IMPACT is committed to good environmental stewardship in its operations and in all of its humanitarian and development programming. IMPACT commits to minimising the environmental impact of our operations.

GOVERNANCE

IMPACT Initiatives is a Swiss-registered association governed by a General Assembly composed of nine members. Among them, five are elected as Committee members.

The **General Assembly** is composed of nine members and normally meet twice a year. The General Assembly approves the yearly Report and Financial Statements as well as the provisional budget of the Association. In addition to this, it decides any modifications to the statutes. Finally, the General Assembly appoints the Committee.

Committee members are elected by the General Assembly for a period of three years. The Committee includes five members, of whom one or two are renewed during the annual ordinary General Assembly. The Committee elect a President, a Secretary and Treasurer. The Committee meets 4-6 times per year, including during General Assembly meetings.

Our Members *(in italic the committee members)*

Claus Sørensen	Gaia Van Der Esch	Philippe Sargisson
Eric Jean R. Deschoenmaeker <i>(Treasurer)</i>	Luigi Paolo De Martino <i>(Secretary)</i>	Vincent Annoni
Frédéric Roussel <i>(President)</i>	Marie-Pierre Caley	Sebastien Lyon

Photo | REACH enumerator





www.impact-initiatives.org



@IMPACT_init

@REACH_info



@IMPACT Initiatives



9 chemin de Balxert

1219 Geneva

Switzerland



+41 22 566 29 63



geneva@impact-initiatives.org

Shaping practices
Influencing policies
Impacting lives

IMPACT